



About Us

Nestled in vibrant downtown Kirkland, just steps from Lake Washington and minutes from Seattle, Bellevue, Redmond, and Woodinville Wine Country, The Heathman Hotel Kirkland is a distinctive meeting and event venue.

Accommodations

- 50 | Classic King
- 17 | Classic Queen/Queen
- 05 | Balcony King
- 04 | Balcony Queen/Queen
- 03 | Prelude King
- 05 | Symphony Suite
- 02 | Renaissance Suite
- 02 | Gallery Suite
- 02 | Terrace Suite
- 01 | The Heathman suite

Accessible Accommodations Available



Contact Us

Website
www.heathmankirkland.com

Email
sales@heathmankirkland.com

Phone
(425) 284-5823



THE HEATHMAN HOTEL

KIRKLAND, WASHINGTON



Our Spaces

Lobby Level

Cascade Room



Lobby Level Cascade Room

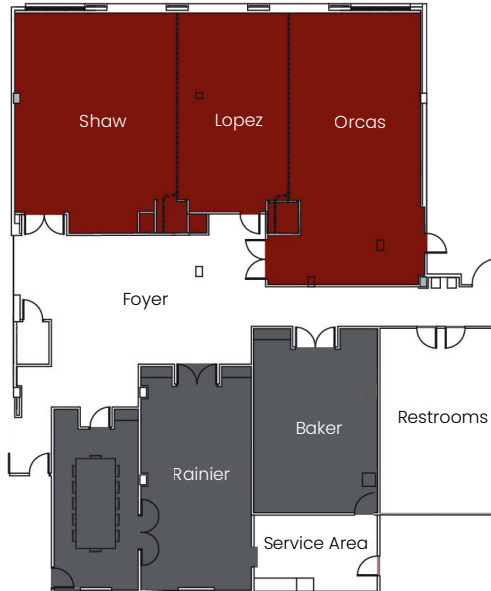
ROOM	DIMENSIONS	SQ FT	THEATRE	CLASSROOM	ROUNDS	RECEPTION	CONFERENCE	U SHAPE
Cascade	28 x 24	680	50	26	40	50	20	21

The Library

ROOM	DIMENSIONS	SQ FT	THEATRE	CLASSROOM	ROUNDS	RECEPTION	CONFERENCE	U SHAPE
Library	20 x 12	417	—	—	—	50	10	—

Lower Level

San Juan Ballroom



Adams Boardroom

Lower Level San Juan Rooms

ROOM	DIMENSIONS	SQ FT	THEATRE	CLASSROOM	ROUNDS	RECEPTION	CONFERENCE	U SHAPE
San Juan Ballroom	61 x 30	2,109	150	46	100	140	26	33
Shaw	25 x 30	770	60	32	50	60	20	21
Lopez	17 x 30	502	—	18	20	20	20	—
Orcas	19 x 41	837	60	32	40	60	20	21
Shaw - Lopez	42 x 30	1,272	70	32	70	80	20	21
Lopez - Orcas	36 x 30	1,339	96	40	50	80	26	33

Meeting Rooms

ROOM	DIMENSIONS	SQ FT	THEATRE	CLASSROOM	ROUNDS	RECEPTION	CONFERENCE	U SHAPE
Baker	18 x 24	480	30	16	24	25	14	15
Rainier	17 x 30	528	40	20	30	30	20	21
Adams Boardroom	12 x 25	323	—	—	—	—	10	—
Ballroom Foyer	20 x 30	1,100	—	—	—	—	—	—

Heathman Suite

ROOM	DIMENSIONS	SQ FT	THEATRE	CLASSROOM	ROUNDS	RECEPTION	CONFERENCE	U SHAPE
Suite	—	1,164	30	18	30	30	15	15

Hearth Restaurant



Hearth Restaurant

ROOM	SQ FT	SEATED	RECEPTION
Dining Room	1,206	54	80
Bar	549	14	—
East Patio	927	36	45
Exclusive Use	—	104	125
Living Room	—	—	35



Meeting & Events

Featuring 4,500 square feet of stylish, sophisticated space, our boutique hotel is the ideal choice for business meetings, conferences, receptions, banquets, and social gatherings for up to 150 guests. From a 2,100-square foot ballroom to a flexible space with its own patio there are many choices to meet your group's specific needs.